

PART OF N.E. 1/4 OF SEC. 27, T.6 N., R.1W.

# NOB HILL ADDITION

TAXING UNIT: 25

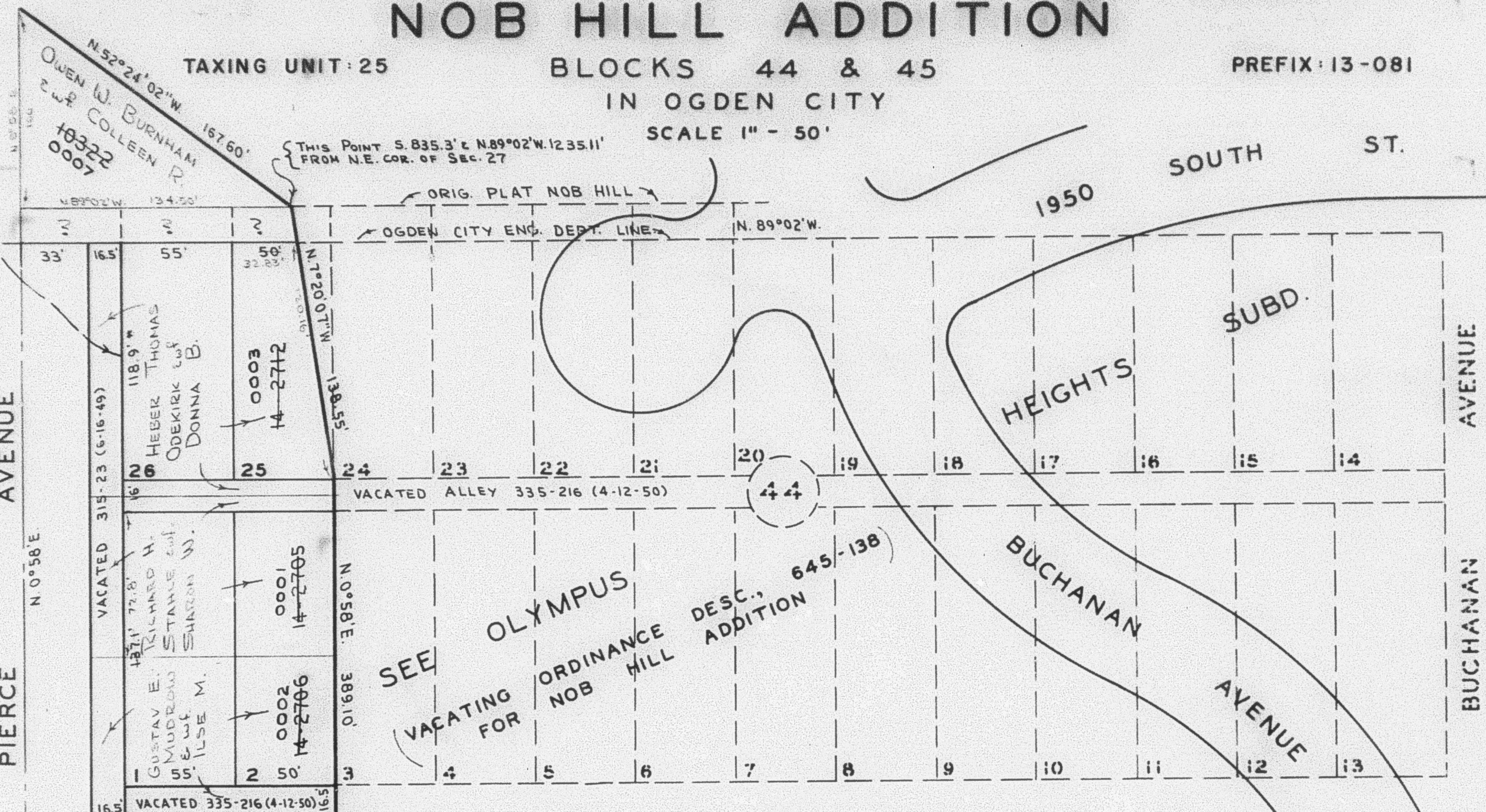
BLOCKS 44 & 45

PREFIX: 13-081

IN OGDEN CITY

SCALE 1" = 50'

THIS POINT S. 835.3' & N. 89°02'W. 1235.11'  
FROM N.E. COR. OF SEC. 27

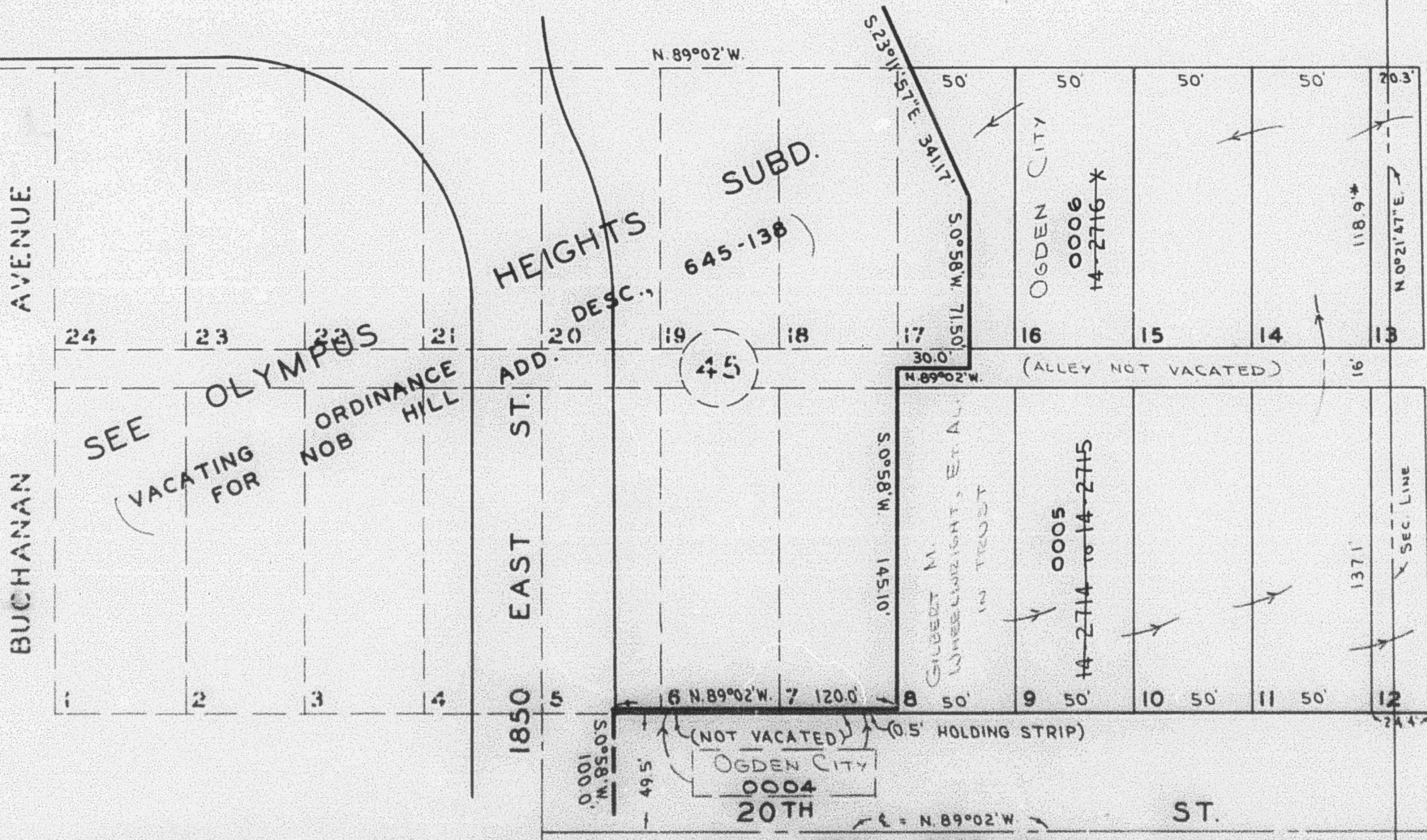


SEE PAGE 87  
(NOTE: DEDICATION PLAT SHOWS 137 FT  
OGDEN CITY ENG. DEPT. PLAT SHOWS 118.9 FT)

SEE DRAWING BELOW LEFT

\* DATA FROM OGDEN CITY ENG DEPT PLATS

20TH ST.  
E = N. 89°02'W. 154.50'  
SEE PAGE 110



SEE DRAWING ABOVE RIGHT

SEE PAGE 79

SEE PAGE 111